



***Calendar of UPCOMING EVENTS***  
Reminder – early dismissal Wed. at 1:45

***November***

8 Jaguar Challenge  
11 Veterans Day—School Closed  
12 SAC Meeting 3:30 pm  
19 PTO Meeting 3:30 pm  
27, 28, 29 Thanksgiving Break

***December***

10 Chorus Holiday Concert 6:30 pm  
17 Band Concert 6:30 pm  
20 Early Release at 1:45 pm  
23 Winter Break Begins—Students return Jan. 6

Please check the school calendar on the website often for additional dates and resource schedule.

***JCES Events and News***

***SAC Meeting***

All are welcome to attend the SAC meeting on Tuesday, November 12 at 3:30 pm in the Media Center.



***Battle of the Books Update***

This year's Battle will be held the last week in January 2020 so we're already practicing. Open practices continue Tuesdays and Thursdays from either 7:50 – 8:10 or 2:50 – 3:20.

The Qualifying-for-the-team test must be taken before or after school on Tuesday, Nov. 12<sup>th</sup> or Thursday, Nov. 14<sup>th</sup> during the same times noted above.

The official Battle of the Books team will be announced and notified on Monday, Nov. 18<sup>th</sup>.

***Clinic Wish List***

- \* Square Great Value (Walmart brand) snack-size Ziploc bags, 100 count.
- \* Girls new generic underwear, shorts, and leggings, sizes 4, 6, and 8.
- \* Boys new generic underwear, and shorts, sizes 6, 8, and 10.



***Thank you from the Multicultural Celebration Team***

We would like to give a BIG thank you for all of the support in making our Annual Multicultural Celebration, "Where are We All From??" such a success! We would also like to recognize our very own Julington Creek PTO, Linda Piscatella, Julington's Fabulous Teachers, Administrators, and Staff for embracing this concept and making Multiculturalism part of their everyday curriculum.

We'd like to thank the many parents who brought in dishes representing many parts of the world. Mrs. Isabelle would like to thank all of the students and parents who helped with the wonderful music program from around the world. We also want to thank Mr. Isabelle for all of his efforts in creating the evening brochure and for assisting with the music program. We'd also like to recognize all of the families who worked together to create posters representing their heritage. Posters from the following students were selected for special recognition: **Sydney Hyatt** (Mrs. Byrd), **Madison Jenkins** (Mrs. Spano), **Luke Watson** (Mrs. L. Lewis), **Sophia Wojnar** (Mrs. A. Larson), **Gabriella Federico** (Mrs. Baker), **Stephanie Ni** (Mrs. Greenlee), **Steven Briggs** (Mrs. Ragusa), **Sophia Barman** (Mrs. Frazier), **Kyle Boyer** (Mrs. Lucas), **Brooks Shelton** (Mrs. Trubey), **Mateus de Andrade** (Mrs. Carson), **Ana Camacho** (Mrs. Graham), and **Amelie Puisley** (Mrs. Conway).

To All Parents and Volunteers:

WITHOUT YOU THIS ACTIVITY WOULD NOT HAVE BEEN POSSIBLE!!!

DANK U, GRACIAS, Khawp khun, MERCI, Kösz, TAKKER DE, Ju falem nderit, Shukran, Dêkuji, Kiitos, Mamnoon, Jaaraama, Danke, Mahalo, Danyavad, Sas efaristo, Toda raba, Makasih, Arigato, Komawoyo, Xie xie, Dzieki, THANKE, Obrigado, Spasibo, Tack så mycket, GRAZIE, Maraming salamat, Merbani, Cám ón, WSKUTEK CZEGO'S . . .

Sincerely,

The members of the Multicultural Committee: *Kathe Isabelle, Linda McAnarney, Dana Johnston, Noreen Carson, Katie Hemingway, Cathy Ragusa, Susan Baker, Suzanne Gentile, Renee Spano, and Cathy Apolinario*

# Jaguar Cafe

**Monday, Nov. 25**  
Mac & Cheese OR  
Chicken Nuggets

**Tuesday, Nov. 12, 26**  
Nacho Lil Bites OR  
Chicken Sandwich OR  
Mini Corn Dogs

**Wednesday, Nov. 13**  
Cheese Pizza OR  
Chicken Poppers

**Thursday, Nov. 14**  
Cheeseburger OR  
Mini Cheese Ravioli OR  
BBQ Chicken Max Snacks

**Friday, Nov. 1, 15**  
Hot Dog OR  
Max Cheese Sticks

**Monday, Nov. 4, 18, Dec. 2**  
Chicken Quesadilla OR  
Chicken Nuggets

**Tuesday, Nov. 5, 19, Dec. 3**  
Cheese Calzonettes OR  
Chicken Sandwich OR  
Mini Corn Dogs

**Wednesday, Nov. 6, 20**  
Chicken Poppers OR  
Cheese Pizza

**Thursday, Nov. 7**  
Pasta & Meatballs OR  
Hot Dog OR  
Max Cheese Sticks

**Thursday, Nov. 21—November Feast!!**

**Friday, Nov. 8, 22**  
Loaded BBQ Fries OR  
Cheeseburger

## Ala Carte

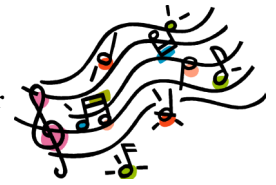
**Mondays: Pizza \$2.25**  
**Tuesdays: Curly Fries \$1.00**  
          Cookies 40¢ (limit 2)  
**Wednesdays: Papa Johns \$1.85**  
**Fridays: Ice Cream \$1.00**

*Teresa Butrimas, Manager*  
**(904)-547-8000**

## JCES Clubs and Activities

### Music News Attention 3<sup>rd</sup> Graders

All 3<sup>rd</sup> graders need to begin bringing their recorder and book to each music class. Students should keep both in their backpacks, only taking them out to practice. Please keep a pencil and a cleaning cloth the size of the cleaning rod (Ex. Bandana, old sheet, thin piece of fabric, thin old T-shirt) in the recorder case.



## General Information

### November JCE Cafe News

New Entree coming 11-8-2019... Loaded BBQ Fries (bbq pork, fries and cheese).



Please note that 11-21-2019 is our November Feast (diced turkey in gravy, mashed potato, green beans, apple crisp, cranberry sauce and a roll).

Please sign up for the Schoolpay.com service. It's a great tool to use for low balance reminders, and purchase information, which are free services. There is a fee if you use it to make a credit card payment to your student's account .

### From the District:

Please check out the new St. Johns County School District Performing & Visual Arts Calendar at <https://www.stjohns.k12.fl.us/arts/calendar/>! This calendar lists performances and events at our County schools that are open to the public!

## Holiday Angel Tree

Julington Creek Elementary will have an Angel Tree this holiday season which will provide gifts to families in need. If you are a family in need of a little extra support this holiday season, please contact Mrs. Milite in Guidance (Ruth.Milite@stjohns.k12.fl.us) by November 26<sup>th</sup>. All calls are confidential.



Don't forget that JCE's STEM Lab is always happy to take donations of old technology... old cell phones, tablets, laptops, etc.

Mrs. Pierce would like to thank all of the wonderful families who have donated to the STEM Lab. These families help to make this a great program!



## The Jaguar

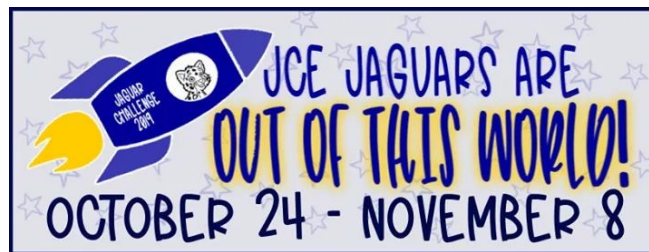
## Challenge is on!

Create your own pledge page to share with family and friends on Facebook and Instagram!

Go to <http://pledgestar.com/jce>

Enter your name and email address, then click register.

Follow the instructions on-screen.



Come cheer on your favorite Jaguar on November 8<sup>th</sup>!

3<sup>rd</sup> Grade (9:05 am – 9:50 am)

1<sup>st</sup> Grade (12:10 pm – 12:55 pm)

4<sup>th</sup> Grade (9:55 am – 10:40 am)

Kindergarten (1:00 pm – 1:45 pm)

5<sup>th</sup> Grade (10:45 am – 11:30 am)

2<sup>nd</sup> Grade (1:50 pm – 2:35 pm)



We hope to see you at the next PTO meeting!

November 19<sup>th</sup> (3:30 pm) in the Media Center

Michael Degutis (CFO) and Bev Slough (School Board Representative) will be our guests to discuss budget and legislative information.

# IS IT A COLD OR FLU?

Signs and Symptoms	Cold	Flu
Symptom onset	Gradual	Abrupt
Fever	Rare	Usual
Aches	Slight	Usual
Chills	Uncommon	Fairly common
Fatigue, weakness	Sometimes	Usual
Sneezing	Common	Sometimes
Stuffy nose	Common	Sometimes
Sore throat	Common	Sometimes
Chest discomfort, cough	Mild to moderate	Common
Headache	Rare	Common

***Flu Season is Upon Us!***

The chart above shows some of the differences between Cold and Flu symptoms.

**What is the flu?** The flu is an illness caused by flu viruses.

**How does the flu spread?** People who have the flu can spread the virus by coughing or sneezing. Droplets released when a sick person coughs, sneezes, or talks can land in the mouths or noses of people who are nearby. The droplets can then be inhaled into the lungs. People may also catch the flu by touching their mouth or nose after touching something with the virus on it, such as doorknobs, tables, or an infected person's dirty hand.

**How sick do people get with the flu?** Some people get very sick and others do not.

**How long can a person with the flu spread the virus to other people?** Most people may be able to spread the flu from 1 day before showing symptoms to 5 to 7 days after symptoms begin. Severely ill persons or young children may be able to spread the flu longer.

**What can I do to protect myself from getting sick?**

The CDC recommends these steps to fight the flu:

- Vaccination
- Wash your hands often with soap and warm water
- Do not touch your eyes, nose, or mouth
- Cover your nose and mouth with a tissue or your arm when you cough or sneeze
- If you are sick with flu-like symptoms, stay home for at least 24 hours after your fever is gone (without using fever-reducing medicine)
- Stay away from people who are sick
- Use medication the way your doctor recommends it



**THE ESE PARENT ADVISORY COMMITTEE,  
ST JOHNS COUNTY SCHOOL DISTRICT  
EXCEPTIONAL STUDENT EDUCATION**

**WELCOMES  
CRAIG A. DAVIS, PhD**

**FOR A DISCUSSION ON:**

***LEVERAGING YOUR CHILD'S  
NEUROPLASTICITY FOR DEEP WORK***

If we are to confront today's immense challenges in public education, we must engage in the deep thinking necessary to solve complex problems with creative solutions. Our day-to-day habits and practices, however, commonly involve shallow thinking (e.g., endlessly scrolling through / posting on social media). Over time, our brains re-map themselves to accommodate this primary mode of intellectual activity, rendering deep thought difficult to achieve. This outcome of neuroplasticity is one of the most critical issues we face in education. If we are to create transformative value for students, we must first leave the shallows.

Because so many are now stuck in the shallows, the ability to engage in deep work has become "the superpower of the twenty-first century" (Cal Newport).

**GOAL:**

To help parents of students with exceptionalities foster habits of deep thinking for their children in order to strengthen their ability to create, to solve problems, and to thrive when confronting complexity.

**ESE PARENT  
ADVISORY  
COMMITTEE**

**ST JOHNS COUNTY  
SCHOOL DISTRICT**

**EXCEPTIONAL  
STUDENT EDUCATION**

**CRAIG DAVIS, PhD**

**NOVEMBER 5, 2019**

**LOCATION:**

**FULLERWOOD TRAINING  
CENTER  
10 HILDRETH DR  
ST AUGUSTINE, FL 32084**

**6:00 PM – 7:30 PM**



# FORTIFYFL

SUSPICIOUS ACTIVITY REPORTING APP

FortifyFL is a suspicious activity reporting tool that allows you to instantly relay information to appropriate law enforcement agencies and school officials.



#FORTIFYFL  
GETFORTIFYFL.COM



DOWNLOAD  
NOW



FLORIDA DEPARTMENT OF  
EDUCATION  
fldoe.org